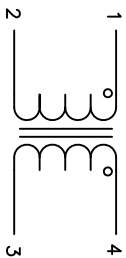


The information contained in this drawing is the sole property of CWS Coil Winding Specialist. Any reproduction in part or whole without written permission of CWS Coil Winding Specialist is prohibited.



SCHEMATIC

6 BUILD TO ROHS COMPLIANCE AND LEAD FREE.

5 MUST LEAVE THE UNTINNED PORTION AS SPECIFIED. REMOVE INSULATION AND TIN LEADS 0.5 INCHES MIN.

4 WIND COILS BIFILAR EVENLY SPACED AROUND THE CORE CONSTRUCTION:

WEIGHT: 2.5 GRAMS TYPICAL

RECOMMENDED AMBIENT OPERATING TEMP: -40°C TO 125°C

HI-POT TEST FOR WINDING TO CORE ISOLATION = 2000VDC, 1s.

LEAKAGE INDUCTANCE = 1uH TYP @ 10KHz

INTERWINDING CAPACITANCE: 12pF TYP (PINS 3-4); 33pF TYP (PINS 1-2) @ SRF

[Z]: 2.2 KILLO-OHMS TYP (PINS 3-4); 830 OHMS TYP (PINS 1-2) @ SRF

SRF: 3MHz TYPICAL (PINS 3-4 AND PINS 1-2)

PINS 3 - 4: DCR = 39.0 MILLI-OHMS MAX.
PINS 1 - 2: DCR = 26.0 MILLI-OHMS MAX.
DCR:

PINS 3 - 4: Ls = 279.00uH ± 25%

PINS 1 - 2: Ls = 100.44uH ± 25%

INDUCTANCE TESTED @ 10KHz, 250mV, 0ADC BIAS:

3 SPECIFICATIONS: @ 25°C:

2 WIRE: UL RECOGNIZED 155°C RATED MAGNET WIRE
CORE: COATED FERRITE CORE

1 MATERIAL: UL RECOGNIZED 94V-0 FOR FLAMMABILITY, RATING CLASS B (130°C MIN.) REQUIRED

ANY TOLERANCE, THIS DIM. CAN VARY A LITTLE FROM PART TO PART.

*TYP IN DIM. TABLE REFERS TO A NON-CRITICAL TYPICAL (AVERAGE) DIM. WITHOUT

NOTES: UNLESS OTHERWISE STATED, READ NOTES FROM BOTTOM UP.

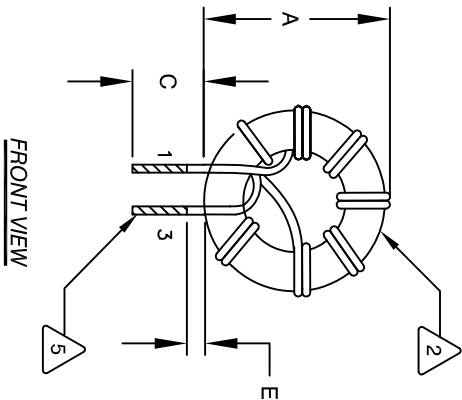
CAGE CODE: 5DME2

DIMENSIONAL TOLERANCES
INCHES [MM]

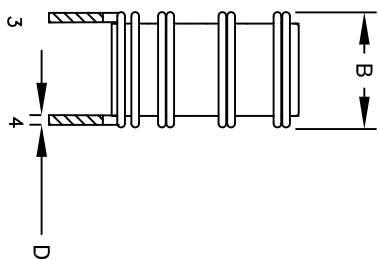
A	B	C	D	E	P
MAX	MAX	MIN	TYP	UNTINNED	REF
0.56 [14.20]	0.25 [6.40]	0.69±0.08 [17.80±2.00]	0.016 [0.40]	+0/-0.06 [-0/-1.5]	0.30 [7.50]

REVISION HISTORY

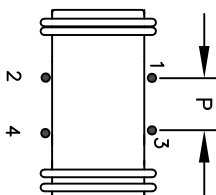
REV	ECN	DESCRIPTION	BY	DATE	CHK	DATE
A		INITIAL DRAWING RELEASE	TN	09/04/22	JL	09/04/22



FRONT VIEW



SIDE VIEW



BOTTOM VIEW

CODE IDENT	MFG. P/N	DESCRIPTION	ITEM NO.
PARTS LIST			
AUTOCAD	X		
SOLIDWORKS			
SIGN	DATE		
DRWN	TN	09/04/22	
CHKD	JM	09/04/22	
ENGR	JL	09/04/22	
APPR	JL	09/04/22	
TITLE:		COMMON MODE CHOKE	
DIMENSIONING AND TOLERANCE PER ANSI Y14.5M AND [MILLIMETERS].		CWS Coil Winding Specialist, 353 W. Grove Ave, Orange, CA 92665	
TOLERANCE INCHES: .XXX=±.005 .XX=±.015 .X=±.030 .XX=±.127 .X=±.38		SIZE [DIM. NO.] CWS-1TF-12218	
ANGLE PROJECTION		SCALE B 2=1	
DO NOT SCALE DRAWING		SHEET 1 OF 1	